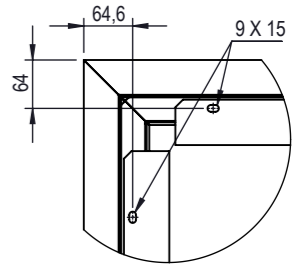
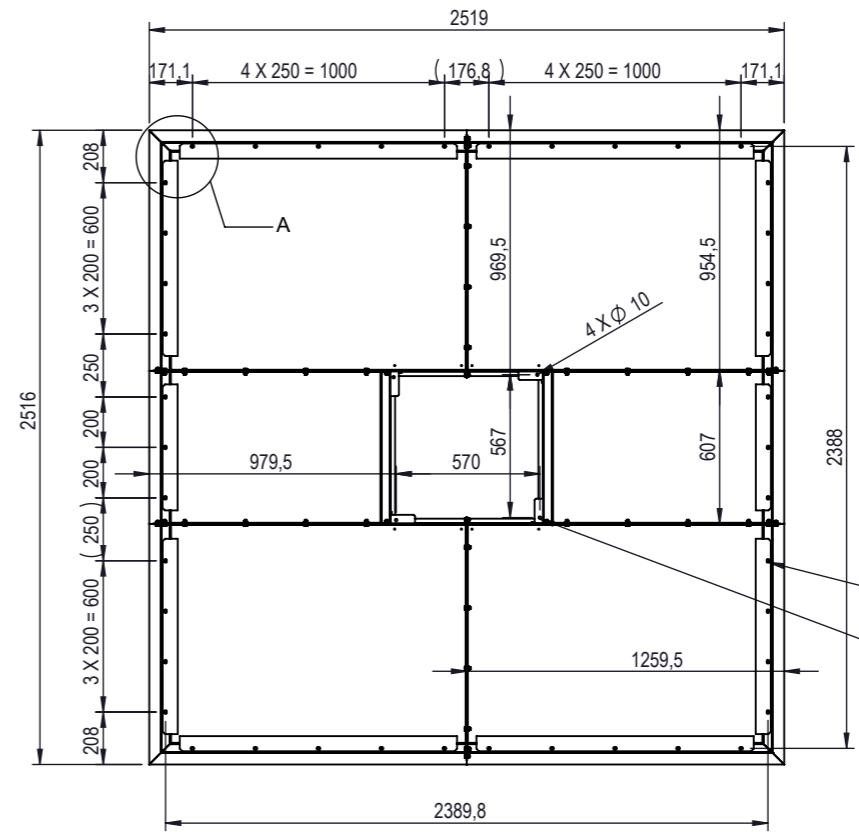
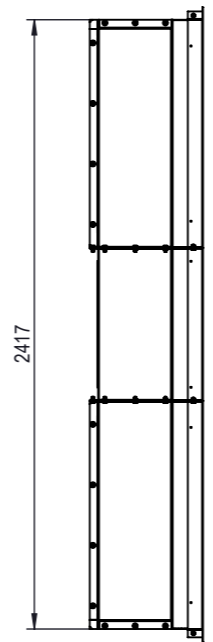
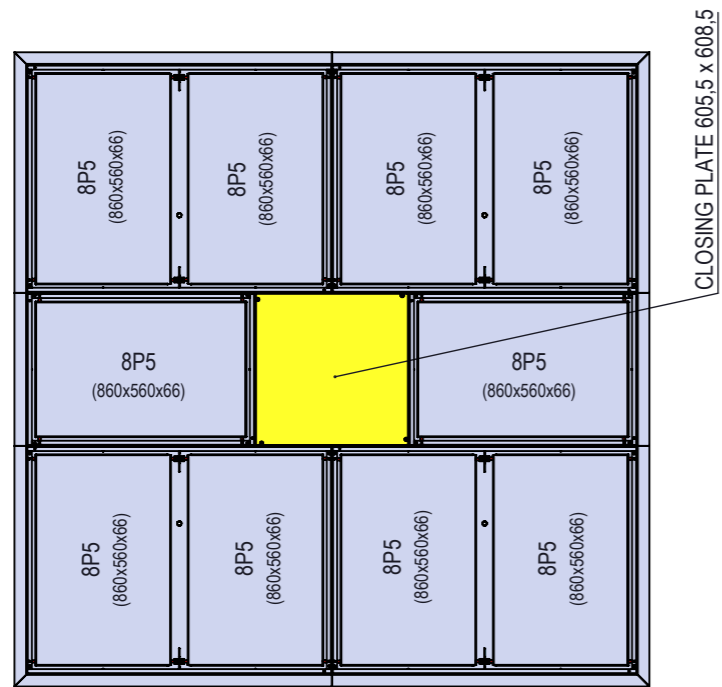


REVISION	DESCRIPTION	DATE	DESIGN	APPROVED
C	AIRFLOW AND AIRSPEED VALUES CHANGED	4.7.2018	MAM <i>[Signature]</i>	VPA <i>[Signature]</i>

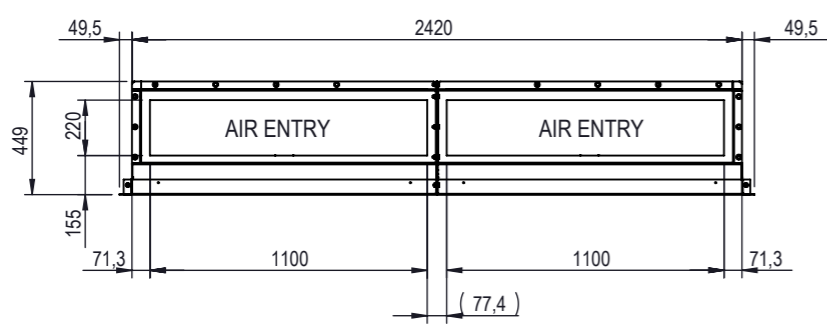
A  
B  
C  
D  
E  
F

A  
B  
C  
D  
E  
F

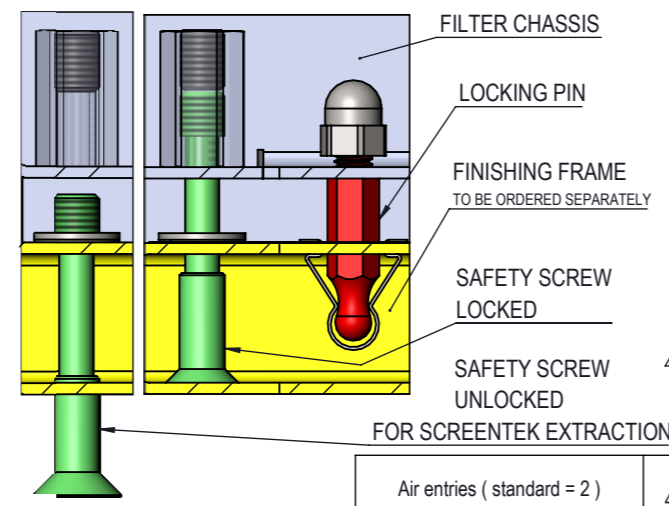
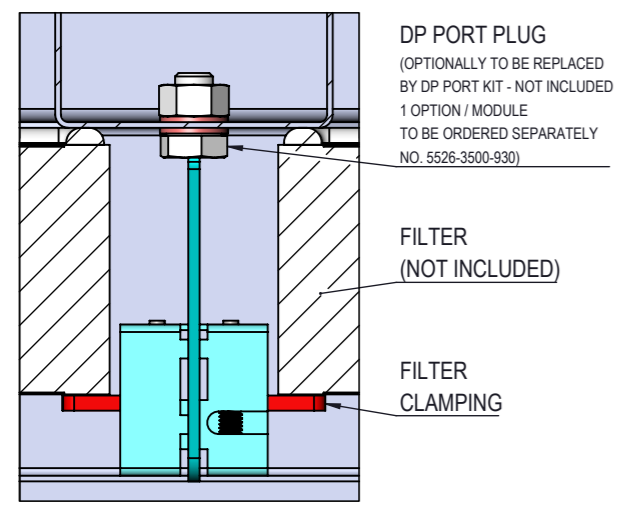
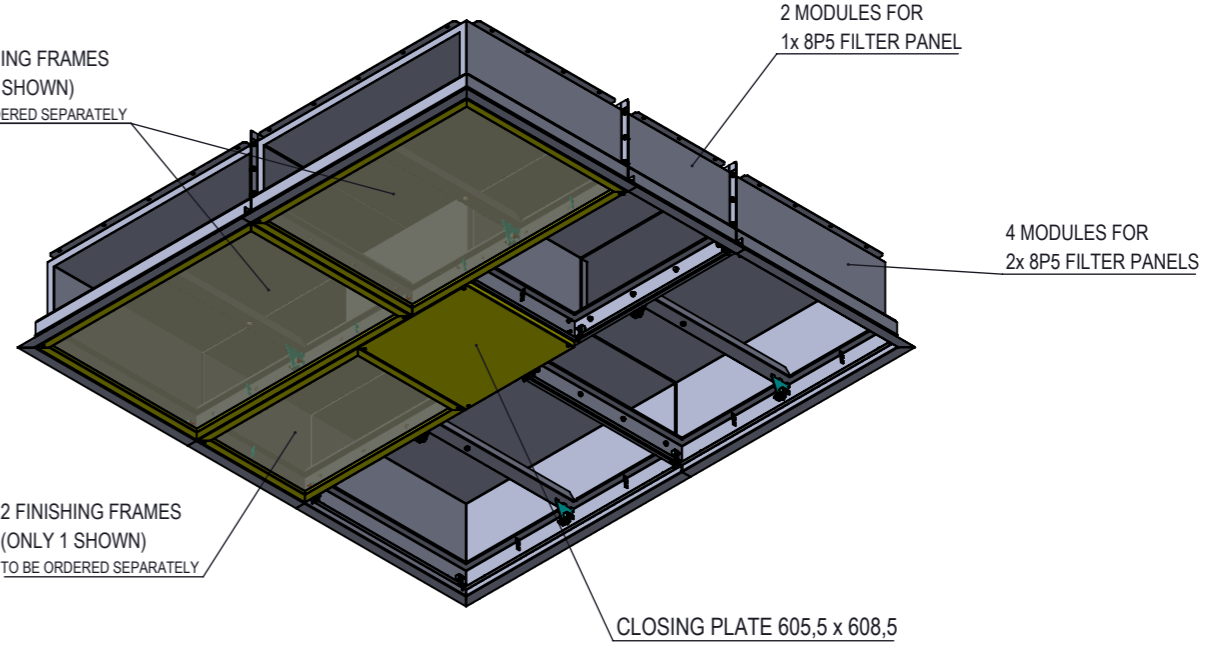


DETAIL A

42 HINGE SUPPORT POINTS ON PERIPHERY  
PLUS 4 IN CENTER



4 FINISHING FRAMES (ONLY 2 SHOWN) TO BE ORDERED SEPARATELY



\* additional air entries required for recommended airspeed <math>< 5\text{m/s}</math>

		Air speed @		
		4120m <sup>3</sup> /h	4950m <sup>3</sup> /h	7420m <sup>3</sup> /h
		0,25m/s	0,3m/s	0,45m/s
<input checked="" type="checkbox"/> std	220 x 1100	2,4	2,8	4,3
<input type="checkbox"/> std	220 x 800	3,3	3,9	[5,9]*
<input type="checkbox"/> cust	_ x _			

Light cover opening	
<input checked="" type="checkbox"/> std	closing plate (1p.)
<input type="checkbox"/> std	φ 140 (2p.)
<input type="checkbox"/> std	φ 400 (2p.)
<input type="checkbox"/> cust	

- Carbon Steel 1.0038 (S235JRG2) Powder Coated to Camfil SPEC025
  - RAL 9010
  - RAL \_\_\_\_\_
- Stainless Steel 1.4307 (304L) pickled - glass blasted
- Stainless Steel 1.4404 (316L) pickled - glass blasted

- Approved
- Approved as noted
- Revise and Resubmit

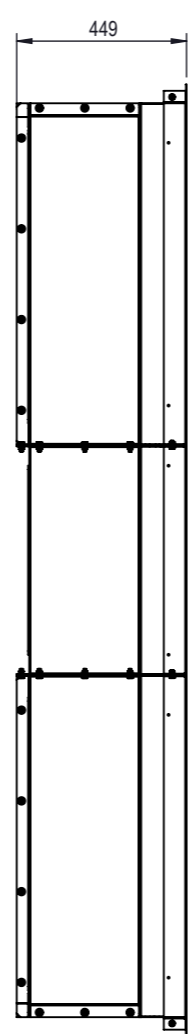
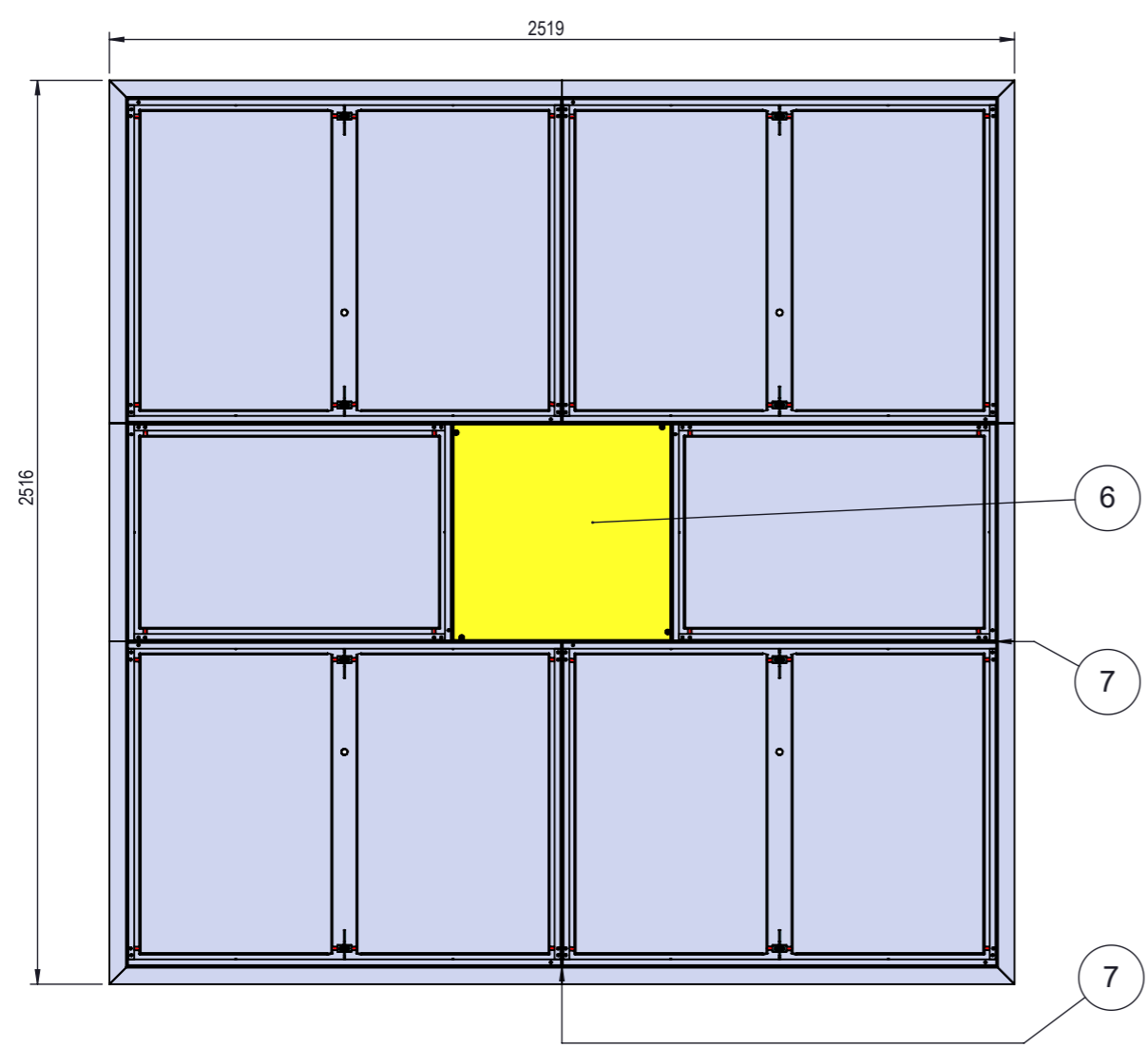
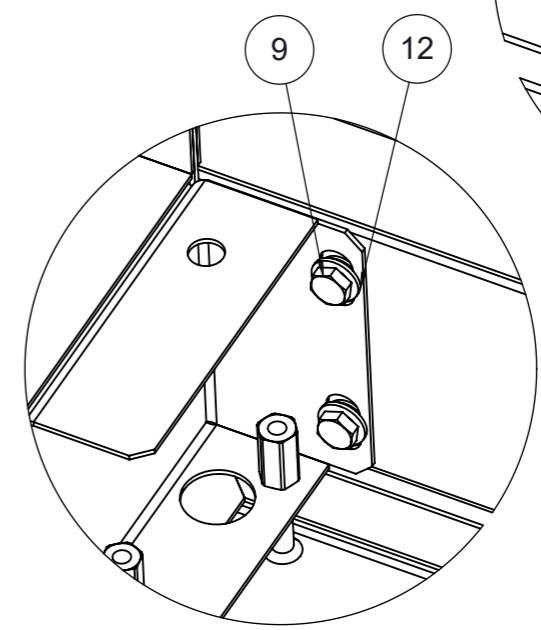
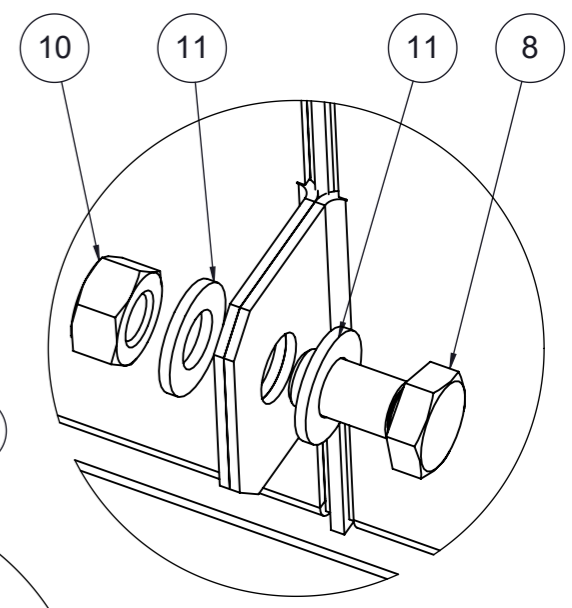
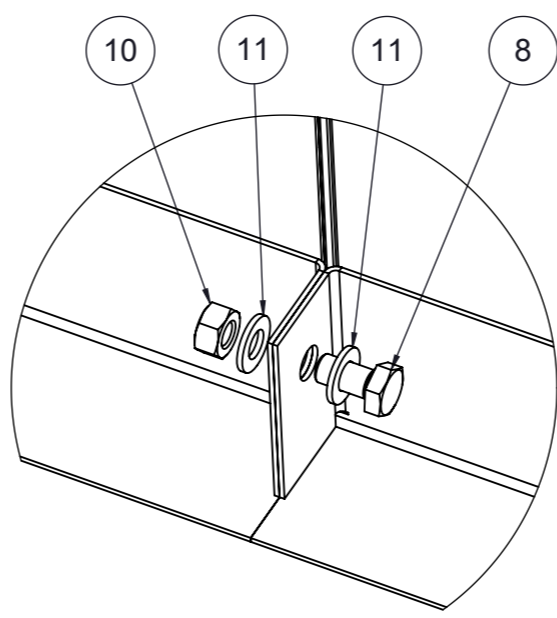
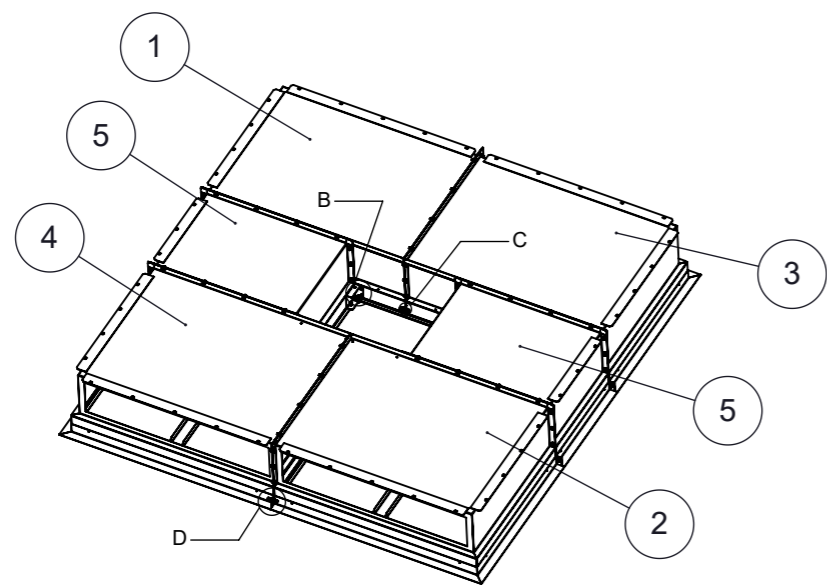


NAME: \_\_\_\_\_ SIGNATURE: \_\_\_\_\_  
COMPANY: \_\_\_\_\_ DATE: \_\_\_\_\_

DESCRIPTION			
CamHosp 2 Type 3			
PROJECT	LAST REVISION	WEIGHT	
-	4.7.2018	194.54 kg	
DRAWING REF.	SHEET	SIZE	SCALE
5526-3000-000	1	A3	1:30

NB: The copyright of this drawing remains with Camfil. Contents must not be used, copied or disclosed to third parties without prior written consent. All rights reserved.

REVISION	DESCRIPTION	DATE	DESIGN	APPROVED
C	AIRFLOW AND AIRSPEED VALUES CHANGED	4.7.2018	MAM <i>[Signature]</i>	VPA <i>[Signature]</i>



ITEM	DRAWING NUMBER	DESCRIPTION	QTY.	CAMHOSP PAINTED MATERIAL	CAMHOSP PAINTED FINISH	CAMHOSP SS 304L MATERIAL	CAMHOSP SS 304L FINISH
1	5526-3011-100	MODULE ASSEMBLY 2X8P5	1	SHEETMETAL - EN10025-2 - S235JR(G2) (1.0038) 1,5mm	Painted RAL 9010 according SPEC025TEC	SHEETMETAL 304L - EN10088 - X2CrNi18-09 (1.4307) 1,5mm	Pickled passivated
2	5526-3021-100	MODULE ASSEMBLY 2X8P5	1	SHEETMETAL - EN10025-2 - S235JR(G2) (1.0038) 1,5mm	Painted RAL 9010 according SPEC025TEC	SHEETMETAL 304L - EN10088 - X2CrNi18-09 (1.4307) 1,5mm	Pickled passivated
3	5526-3012-100	MODULE ASSEMBLY 2X8P5	1	SHEETMETAL - EN10025-2 - S235JR(G2) (1.0038) 1,5mm	Painted RAL 9010 according SPEC025TEC	SHEETMETAL 304L - EN10088 - X2CrNi18-09 (1.4307) 1,5mm	Pickled passivated
4	5526-3022-100	MODULE ASSEMBLY 2X8P5	1	SHEETMETAL - EN10025-2 - S235JR(G2) (1.0038) 1,5mm	Painted RAL 9010 according SPEC025TEC	SHEETMETAL 304L - EN10088 - X2CrNi18-09 (1.4307) 1,5mm	Pickled passivated
5	5526-3540-100	MODULE ASSEMBLY 1X8P5	2	SHEETMETAL - EN10025-2 - S235JR(G2) (1.0038) 1,5mm	Painted RAL 9010 according SPEC025TEC	SHEETMETAL 304L - EN10088 - X2CrNi18-09 (1.4307) 1,5mm	Pickled passivated
6	5526-3500-200	CLOSING PLATE KIT 3.5	1	SHEETMETAL - EN10025-2 - S235JR(G2) (1.0038) 1,5mm	Painted RAL 9010 according SPEC025TEC	SHEETMETAL 304L - EN10088 - X2CrNi18-09 (1.4307) 1,5mm	Pickled passivated
7	5526-3500-920	GASKET KIT	6	EPDM - ASTM D 1056 - 2 A2 black	-	EPDM - ASTM D 1056 - 2 A2 black	-
8	-	Hex head screw - ISO 4017 M8x16x16	8	SS A2 (304L)	-	SS A2 (304L)	-
9	-	Hex head screw - ISO 4017 M6x16x16	8	SS A2 (304L)	-	SS A2 (304L)	-
10	-	Hex nut - ISO 4032 M8	8	SS A2 (304L)	-	SS A2 (304L)	-
11	-	Washer - NF E25-513 M8	16	SS A2 (304L)	-	SS A2 (304L)	-
12	-	Washer - NF E25-513 M6	8	SS A2 (304L)	-	SS A2 (304L)	-

General tolerances ISO 2768 - vL unless otherwise specified	
DIMENSION	TOLERANCE
< 30	± 1
> 30 to 120	± 1,5
> 120 to 400	± 2,5
> 400 to 1000	± 4
> 1000 to 4000	± 6
> 4000	± 8
Break sharp angles 0,5 to 2	



DESCRIPTION			
CamHosp 2 Type 3			
PROJECT	LAST REVISION	WEIGHT	
-	4.7.2018	194.54 kg	
DRAWING REF.	SHEET	SIZE	SCALE
5526-3000-000	2	A3	1:20

NB: The copyright of this drawing remains with Camfil. Contents must not be used, copied or disclosed to third parties without prior written consent. All rights reserved.